

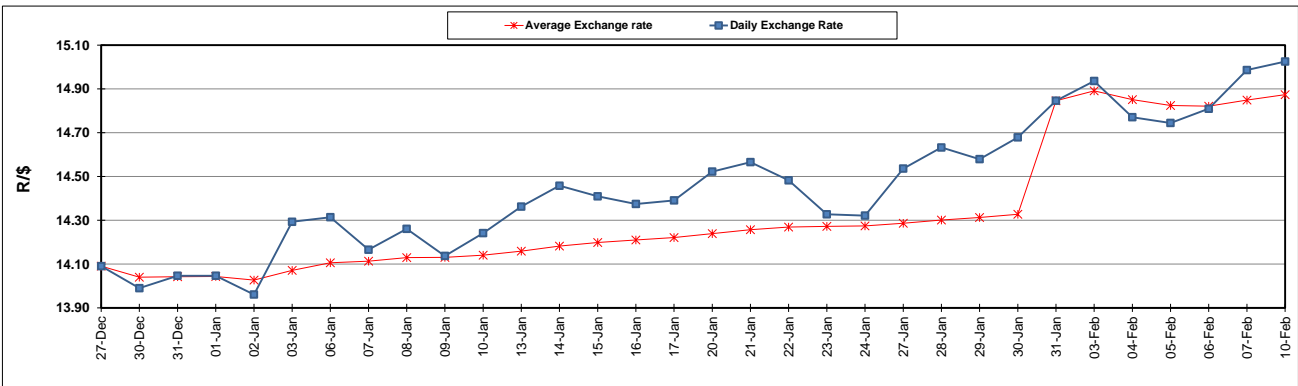
	PETROL 95 ULP	PETROL 93 ULP & LRP	DIESEL 0.05%	DIESEL 0.005%	ILL. PAR.
GAUTENG PUMP PRICE (SA c/l) AS FROM 05/02/2020	1,603.000	1,571.000	-	-	-
WHOLESALE PRICE (SA c/l) AS FROM 05/02/2020	-	-	1,457.260	1,462.660	924.728
SINGLE NATIONAL MAXIMUM RETAIL PRICE	-	-	-	-	1,176.000
BASIC FUEL PRICE - 10/02/2020 (SA c/l)	672.129	660.097	683.128	689.472	666.152
PRESS RELEASE CONTRIBUTION TO BFP 05/02/2020 - 10/02/2020 (SA c/l)	686.970	664.970	737.630	743.030	734.128
UNIT OVER/(UNDER) RECOVERY - 10/02/2020 (SA c/l)	14.841	4.873	54.502	53.558	67.976
AVERAGE BASIC FUEL PRICE 31/01/2020 - 10/02/2020	664.663	653.402	683.467	689.230	669.292
AVERAGE UNIT OVER/(UNDER) RECOVERY 31/01/2020 - 10/02/2020	27.878	17.139	56.306	55.943	66.121

### ANALYSIS MOVEMENT OF AVERAGE OVER/(UNDER) RECOVERY

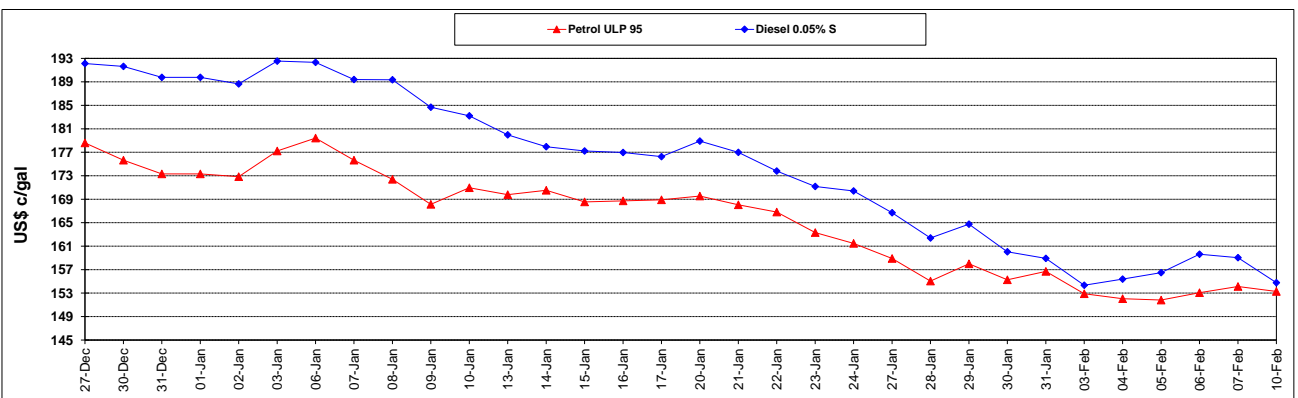
	PETROL 95	PETROL 93	DIESEL 0.05%	DIESEL 0.005%	ILL. PAR.
- MOVEMENT IN INTERNATIONAL PRODUCT PRICES	52.295	41.142	81.413	81.262	90.709
- MOVEMENT IN EXCHANGE RATE	(24.417)	(24.003)	(25.107)	(25.319)	(24.587)
AVERAGE UNIT OVER/(UNDER) RECOVERY 31/01/2020 - 10/02/2020	27.878	17.139	56.306	55.943	66.122

### R/\$ EXCHANGE RATE - (R/\$15.0249 - 10/02/2020)

#### EXCHANGE RATE USED IN BASIC FUEL PRICE



#### INTERNATIONAL PRODUCT PRICES OF BASKET USED IN BASIC FUEL PRICE



#### BASIC FUEL PRICE IN SA CENTS PER LITRE

